

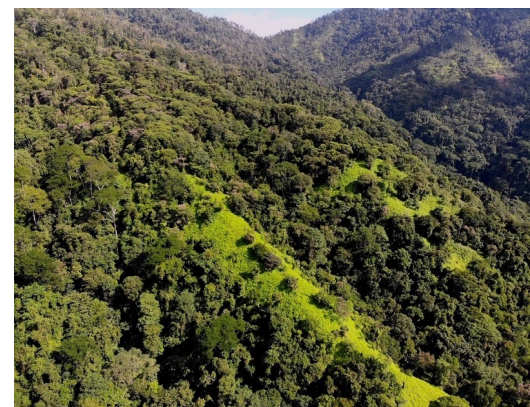
Savegre Mountain and Waterfall Farm with Ocean views

Sold

ID: 11124

📍 Savegre, Puntarenas

- Property Type: Land
- Size: 1890000 sq m
- 467.04 Acres



- Status: Sold
- Equestrian
- Mountain Properties
- Valley Views
- Acreage
- Investment Opportunities
- Mountain View
- Waterfall View
- Development Farm
- Jungle Views
- Ocean View
- Water Views

Property Description

Over 466 acres of pristine mountainside with a mix of pastureland, secondary and primary forested lands with rivers as boundaries on two sides. This amazing parcel of land is located along the south Pacific sector of Costa Rica just south of Manuel Antonio/Quepos and just north of beach town of Dominical. Property boasts epic views looking down the valley of the Portalon River out to the Pacific, with frontage along two sides with amazing waterfalls and pools. If you are seeking isolation and want to be in harmony with nature, look no further, this property is the one! Perfect for an eco-retreat, wellness center or organic farming etc... Nearby activities include hiking, waterfalls, snorkeling, diving, sportfishing, ziplining, and so much more....

Additional

- ID 11124
- Sold
- For Sale
- Land
- Sold
- View : Ocean

+506 8752-7000

20 m South from Hotel Nantipa,
Santa Teresa de Cobano, Puntarenas,
Costa Rica.



REAL ESTATE AGENT

James Drews

Coldwell Banker Vesta Group Dominical

[US Toll Free: 877-309-9238](tel:877-309-9238)

[Costa Rica Direct: +506 8752-7000](tel:+50687527000)

